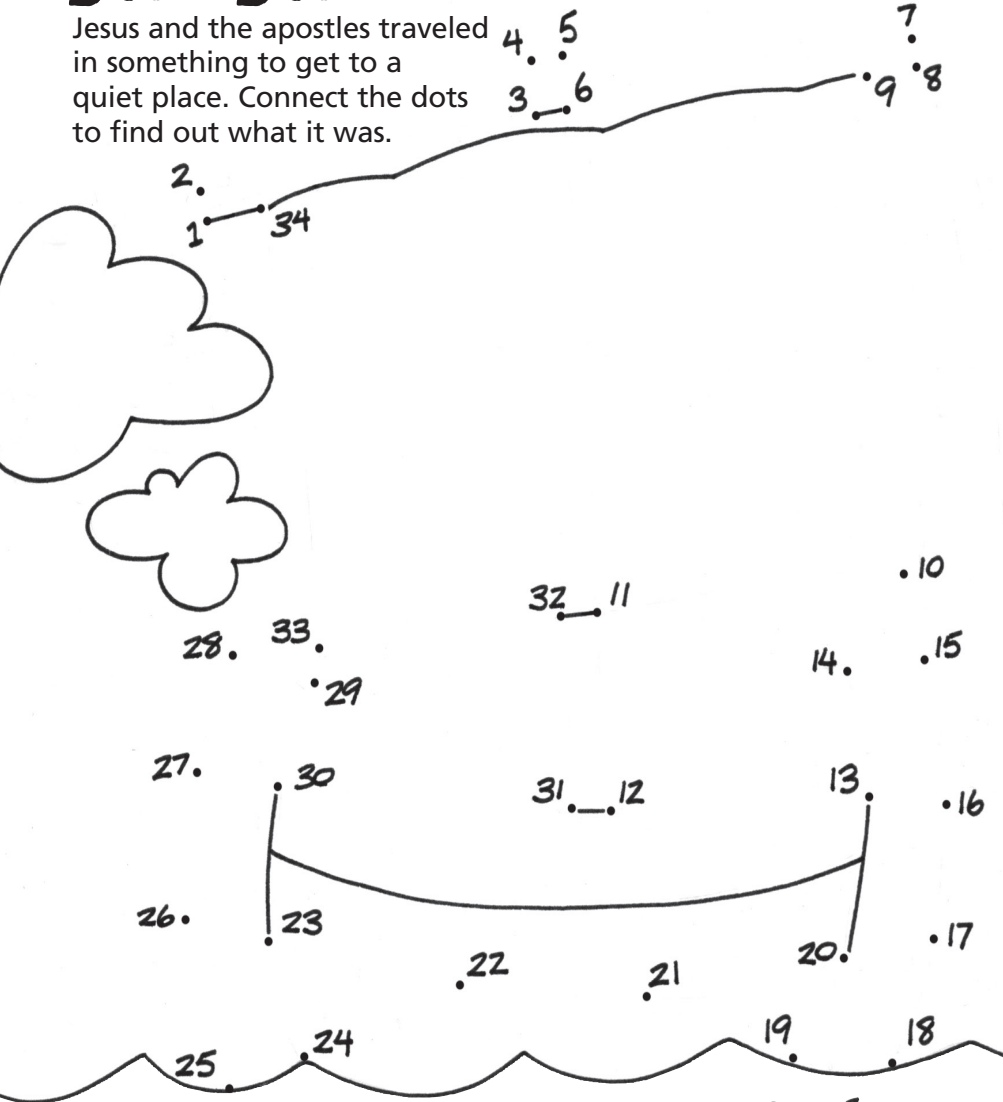


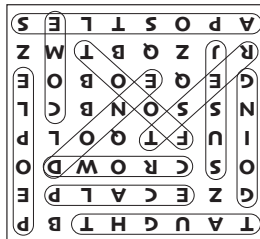
# DOT to DOT

Jesus and the apostles traveled in something to get to a quiet place. Connect the dots to find out what it was.



## ANSWERS

## WORD SEARCH



## HIDDEN MESSAGE

THEY WERE LIKE SHEEP WITHOUT A SHEPHERD.



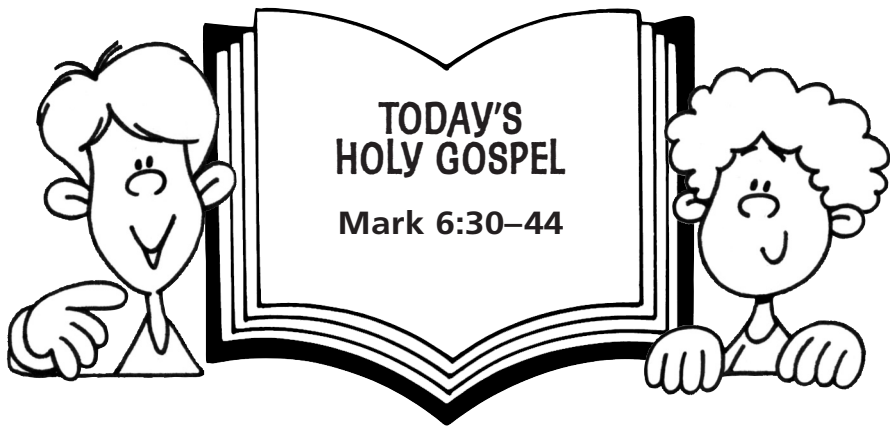
# 9th Sunday after Pentecost



When He went ashore He saw a great crowd, and He had compassion on them, because they were like sheep without a shepherd. *Mark 6:34*

Permission to copy granted for one-time use on July 21, 2024, only.

NAME: \_\_\_\_\_

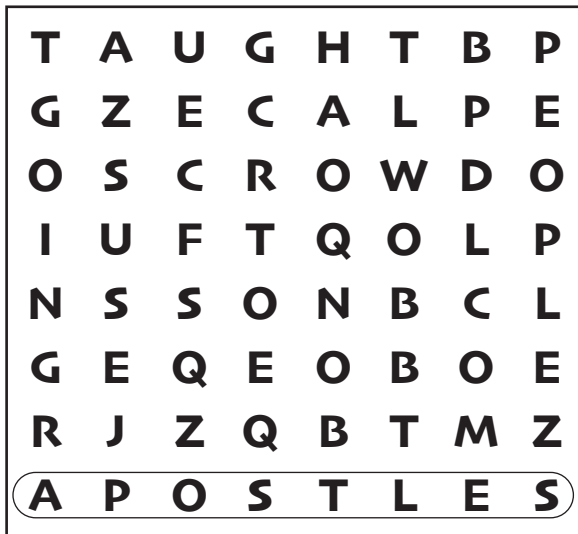


## WORD SEARCH

Try to find 11 words from today's Holy Gospel in the puzzle. You may go up or down, from side to side, or diagonally. Circle each word as you find it and mark it off the list. One word has been done for you.

### APOSTLES

- DONE
- FOOT
- REST
- CROWD
- JESUS
- COME
- PLACE
- GOING
- PEOPLE
- TAUGHT



## HIDDEN MESSAGE

Jesus felt sorry for the large crowd of people. To find out why, circle every third letter in the puzzle and write the letters on the lines below. Then divide them into words and find out what Jesus said about the people.



C A T C H H A Y  
 E E R Y B O W L  
 R E M A R K M E  
 C A L L S I N K  
 K N E E L A S K  
 C H I M E D O E  
 A P P P O W E R  
 I N I T T O H I  
 N O B B U R S T  
 C H A I R S T O  
 H E R E L A P S  
 S H I N E B A R  
 N O D

---



---