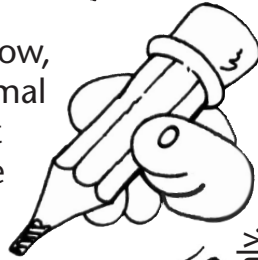
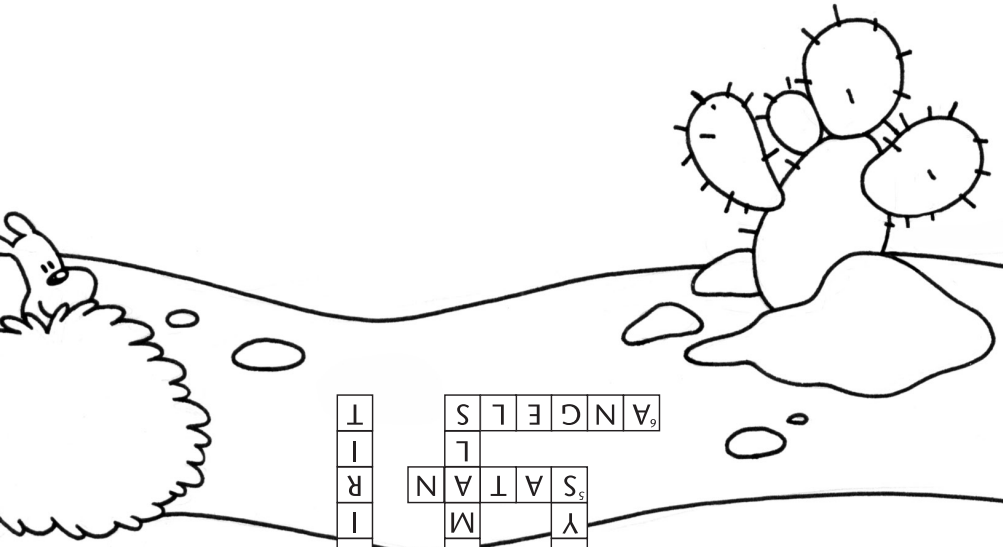
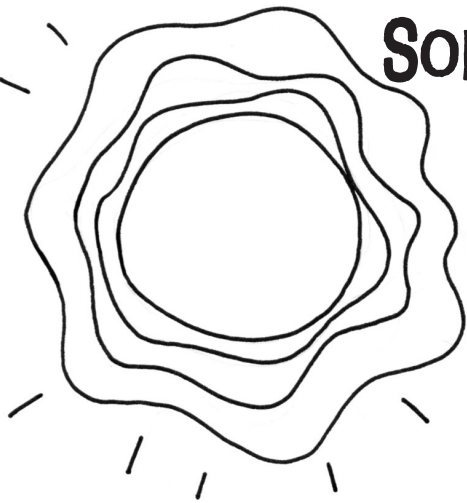


# SOMETHING to DRAW

In the space below, draw a wild animal that Jesus might have seen in the desert.



Permission to copy granted for one-time use on February 18, 2024, only.



T	S	A	N	G	E	L	S
I	L						
R	N	S	A	T	A	N	
I	M			Y			
P	I	A					
S	S	E	N	D	E	R	N
A							

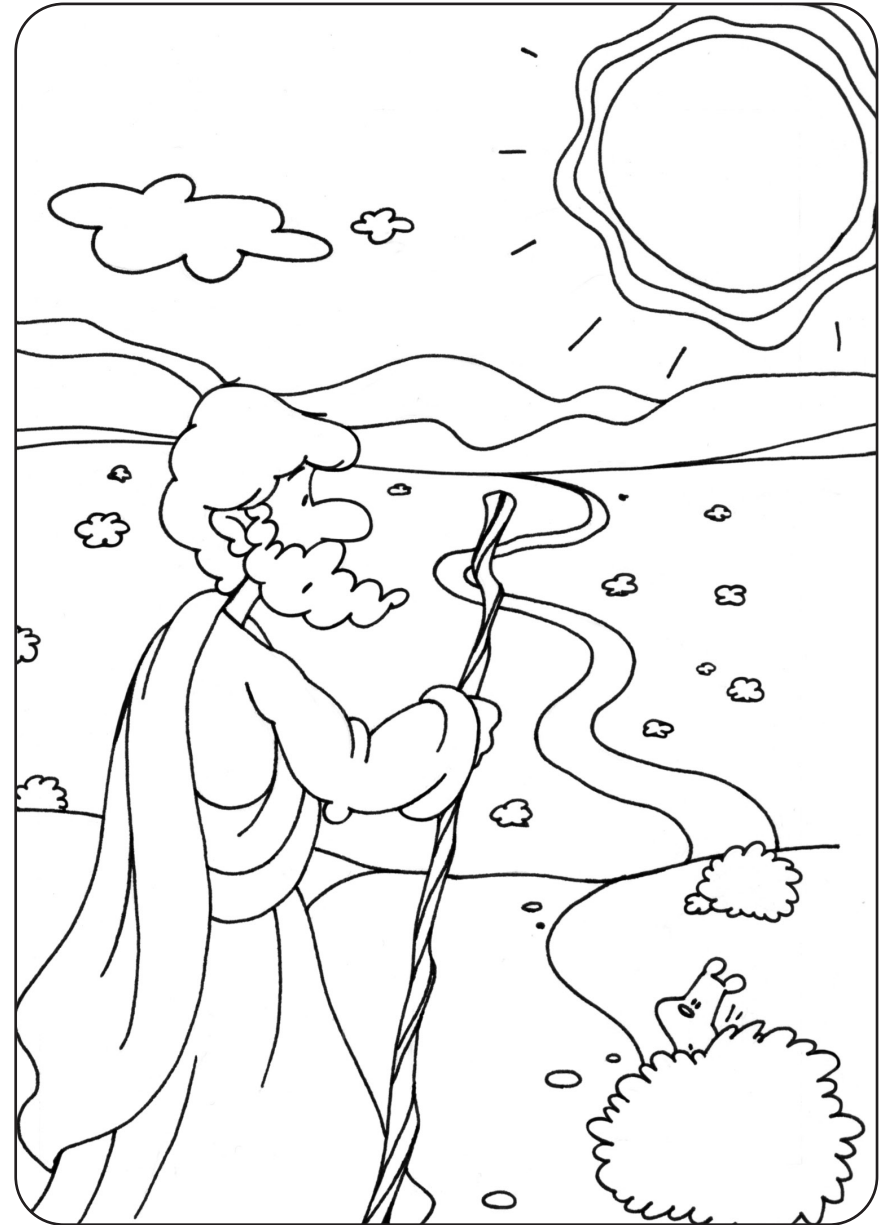
HIDDEN MESSAGE

THE KINGDOM OF GOD IS AT HAND.

ANSWERS

CROSSWORD PUZZLE

# 1st Sunday in Lent



[Jesus] was in the wilderness forty days, being tempted by Satan.

Mark 1:13

NAME: \_\_\_\_\_



## HIDDEN MESSAGE

Jesus told good news. Circle every third letter in the puzzle, and write the letters on the lines below. Then, divide them into words to learn some of the good news.

M	A	T	H	C	H	I	N
E	R	I	K	S	L	I	P
S	N	A	G	G	R	A	D
M	O	O	N	S	M	U	G
O	N	O	F	F	E	G	G
R	O	O	T	D	E	L	I
R	O	S	E	E	A	R	S
T	E	C	H	D	E	A	R
S	N	O	O	D			

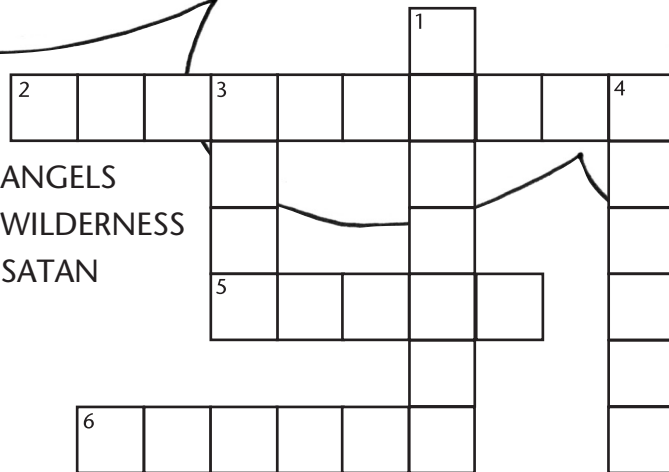
## CROSSWORD PUZZLE

Try to put words from today's Gospel into the crossword puzzle. (If you need help, use the word list.)

The (4 down) sent Jesus into the (2 across).  
He was there forty (3 down). (5 across) tempted Him.  
He was with wild (1 down). (6 across) were with Him too.

### WORD LIST

- DAYS
- ANGELS
- ANIMALS
- WILDERNESS
- SPIRIT
- SATAN



\_\_\_\_\_

\_\_\_\_\_

\_\_\_\_\_

